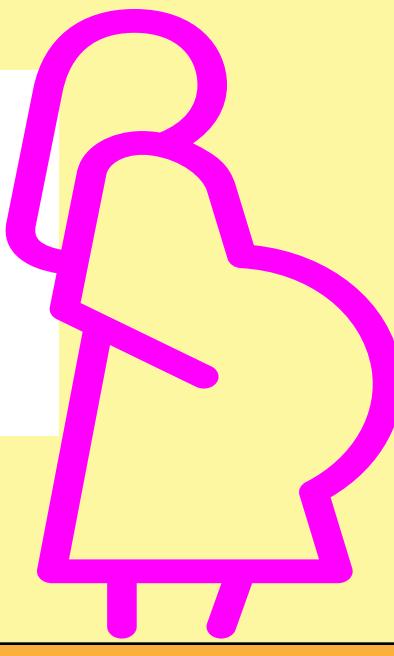


CARE OF NEONATES BORN TO PREGNANT WOMEN WITH SUSPECTED OR CONFIRMED SARS-CoV-2 INFECTION

UC DAVIS HEALTH

CHILDREN'S HOSPITAL

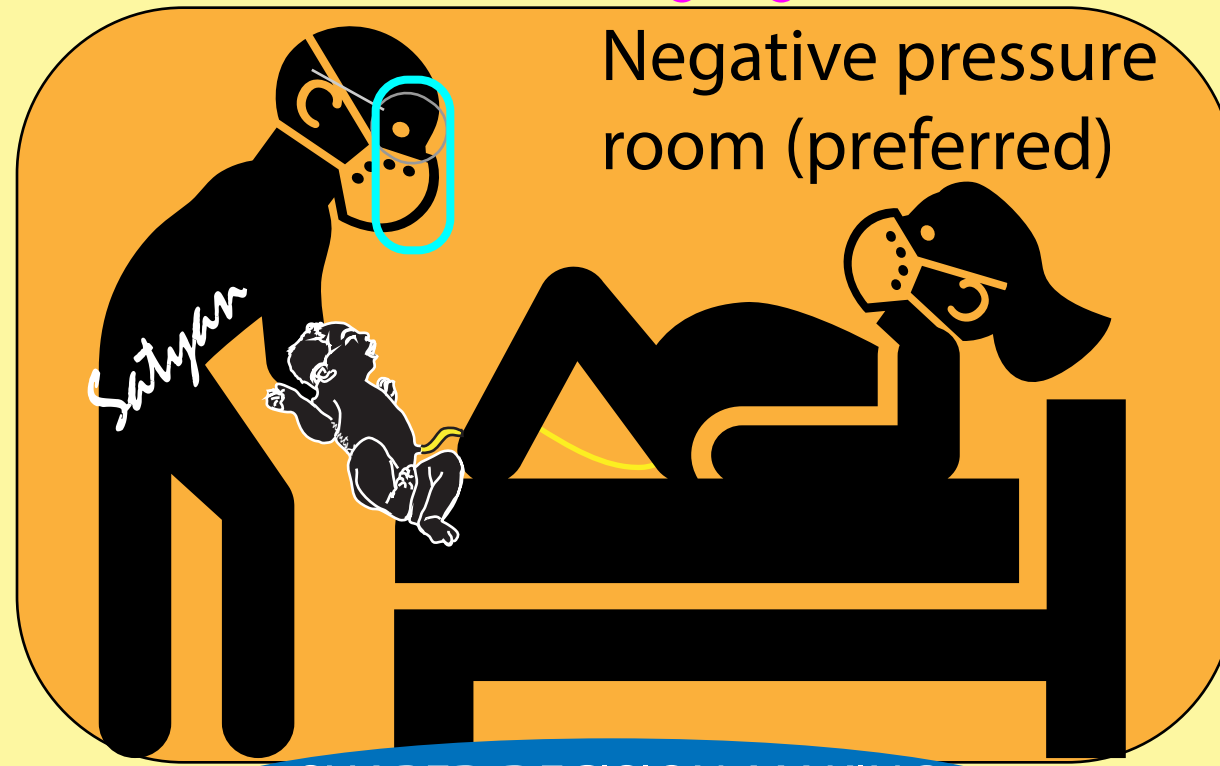


Presentation with "influenza-like illness"

Testing for SARS-CoV-2 infection

PAPR or N95 masks + eye shield
gown and glove - all providers if risk of aerosol generation

Mother - mask



Negative pressure room (preferred)

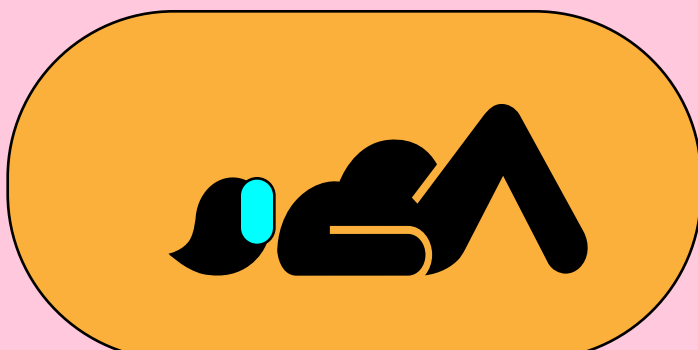
No skin-to-skin contact
Delayed cord clamping by provider holding baby without maternal skin contact;

Limit providers in DR/OR to minimize exposure

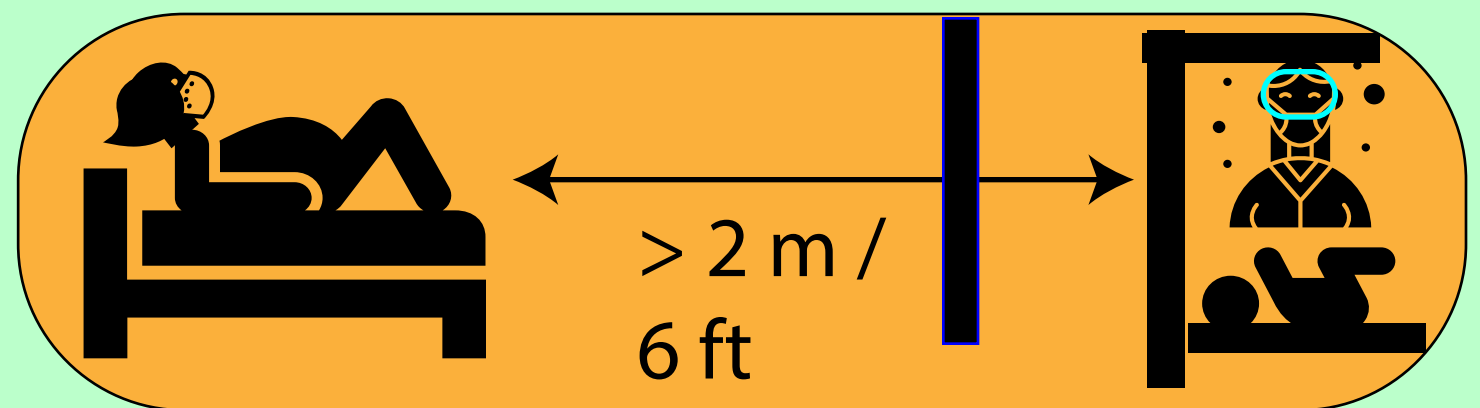
SHARED DECISION-MAKING WITH PARENTS

STRICT ISOLATION STRATEGY TO LIMIT RISK OF TRANSMISSION TO NEONATE

STRATEGIES TO PROMOTE INFANT BONDING



Neonatal resuscitation and further care in a separate room followed by bath (if stable) and placement in an isolette

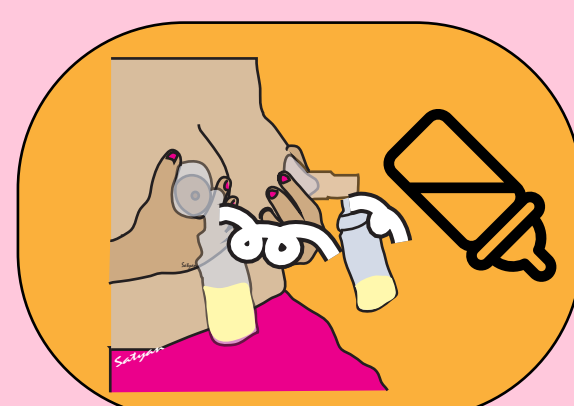


Neonatal resuscitation in the same room > 6 ft from mother (consider a physical barrier - e.g., curtain) followed by a bath (if stable)

NUTRITION - shared decision-making with parents to discuss 3 choices

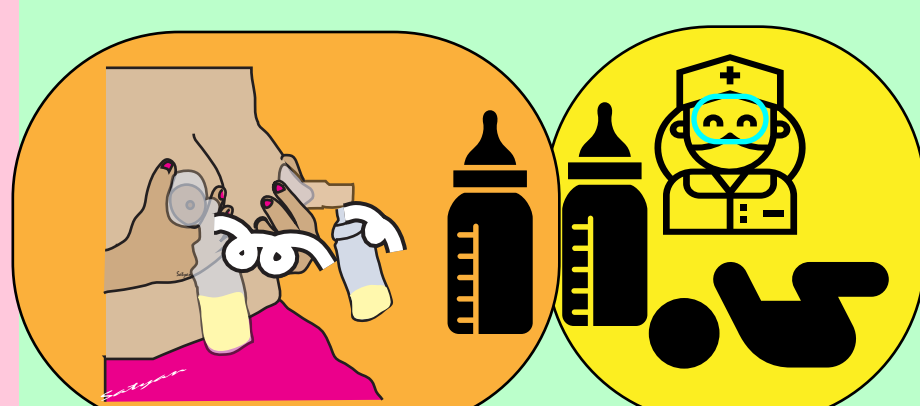


Formula or donor milk (if available)



Pump and discard EBM* (if Mother desires to breastfeed)

OR



Clean breasts express BM with precautions*

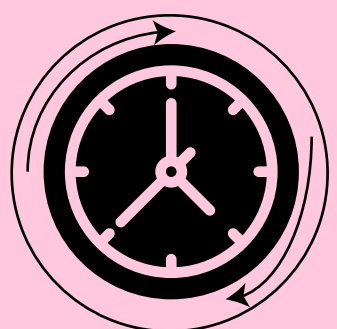
OR



Mother-PPE clean breasts*-breastfeeding

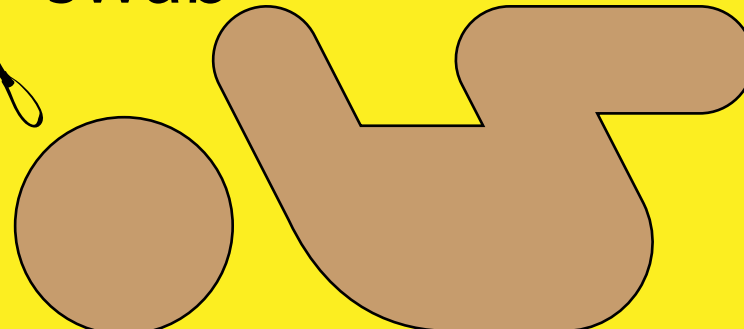
* direct breastfeeding without PPE can be resumed after 2 negative maternal SARS-CoV-2 tests \geq 24h apart + resolution of fever/symptoms or if infant is also positive for SARS-CoV-2

TESTING FOR SARS-CoV-2



24h and 48 h after birth

Nasopharyngeal and oropharyngeal swab



Tracheal aspirate - if intubated

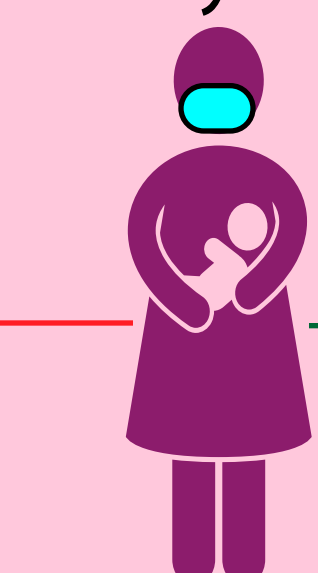


24h after birth only

DISCHARGE PROCESS IN ASYMPTOMATIC INFANTS

Mother +ve
Baby - ve

Discharge to a healthy caretaker until mother has resolution of fever + improvement in signs/symptoms + two negative SARS-CoV-2 tests \geq 24h apart



Retest infant in 2-3 weeks

Discharge to mother with contact & droplet precautions until mother has resolution of fever + improvement in signs/symptoms + 2 negative SARS-CoV-2 tests \geq 24h apart

Mother +ve
Baby +ve (both asymptomatic)



Discharge home with mother

Close follow-up of mother and infant through video visits and telephone calls